

Technical Information

PRINTING SPECIFICATION		
Model Name		LR4NX-FA L (Left Hand); LR4NX-FA R (Right Hand)
Printing Method		Direct Thermal / Thermal Transfer
Print Resolution		8 dots/mm (203 dpi); 12 dots/mm (305dpi)
Max. Print Speed		10ips
Max. Print Area	Width	104mm
	Length	1500mm ; 2500mm
Internal Memory / Receive Buffer		User Area: Max. 619MB Receive Buffer: Max. 2.95MB (Buffer near full at 2MB, released at 1MB)
Application Method		PJ (Press Jet) Type: Cylinder stroke is 200mm (Valid stroke is within 170mm) CJ (Cylinder Jet) Type: Cylinder stroke standard 200mm (valid stroke is within 182mm) Blowing distance up to 10mm, conveyor speed up to 21m/min
Mounting Stand		Top, on top of product travel (U-Type) Side - Vertical, 90 degrees to product travel (V-Type) Side - Horizontal, in line with product travel (H-Type)

CONSUMABLE SPECIFICATION		
Label Type		Roll paper
Label Thickness		140 ~ 240μm (Including Liner)
Label Shape	Diameter	Core inner diameter: φ76.2 mm (φ3") Outer diameter: φ280mm (φ11")
	Wind Direction	Face-in / Face-out
Label Size (Without Liner)	Width	30 ~ 117mm (Depends on application method)
	Length	30 ~ 120mm (Depends on application method)
Ribbon	Size	Max. Length: 600m Width: 39.5 ~ 111mm
	Other	Wind Direction: Face-in / Face-out Core Diameter: φ25.4mm (φ1")

FONTS & SYMBOLOGIES		
Internal Fonts	Standard Bitmap	U, S, M, WB, WL, XS, XU, XM, XB, XL, OCR-A, OCR-B, Kanji, Chinese (GB18030, Big 5), Korean (KSX1001)
	Scalable Fonts	15 SATO Fonts Single and Double Byte Fonts (Korean, Chinese, Japanese)
Barcode	Linear	UPC-A, UPC-E, JAN/EAN, CODE39, CODE93, CODE128, GS1-128(UCC128/EAN128), CODABAR(NW-7), ITF, Industrial 2of5, Matrix 2of5, MSI, Customer Barcode, POSTNET, UPC add-on code, BOOKLAND, USPS, GS1 DataBar Omnidirectional, GS1 DataBar Truncated, GS1 DataBar Stacked, GS1 DataBar Stacked Omnidirectional, GS1 DataBar Limited, GS1 DataBar Expanded, GS1 DataBar Expanded Stacked
	2D Symbolologies	PDF 417, Micro PDF, Maxi Code, GS1 DataMatrix, QR Code, Micro QR, Data Matrix (ECC200), Aztec
Composite Symbols		GS1 DataBar Composite, GS1 DataBar Truncated Composite, GS1 DataBar Stacked Composite, GS1 DataBar Stacked Omnidirectional Composite, GS1 DataBar Limited Composite, GS1 DataBar Expanded Composite, GS1 DataBar Expanded Stacked Composite

INTERFACE CHARACTERISTICS	
Interface	Data Interface: LAN 10BASE-T/100BASE-TX(IPv4/IPv6, SNMPv1~v3 MIB- II , FTP, NTP, LPR, DHCP, Http/Https), RS-232C, IEEE1284 For configuration: USB2.0 High-speed TypeA*1
External Signal Interface	Connector: 20 pin (Terminal block: M3)

OPERATING CHARACTERISTICS		
Air (*Under supply of oil-free, moisture-free clean air)	Pressure	0.45 ~ 0.5 MPa (4.5 - 5.0 Kgf/cm2)
	Consumption	Approximately 80 litres/min (Depends on application method, label size, application process capacity, and other conditions)
Environment	Operating	5~35℃/25~85%RH (without condensation)
	Storage	-5~60℃/25~90%RH (without condensation)
Electrical	Universal Auto-ranging Power Supply, 100-240 VAC +/-10%, 50/60 Hz	
Power Consumption	Peak: 190W/190VA, Standby: 20W/30VA	
Dimensions	W612mmxD325mmxH546mm	
Weight	Approximately 29.5kg(PJ Type)	

MISCELLANEOUS	
Agency Approvals	RoHS, KC, IEC60950-1, EN60950-1, EN55032 Class A, EN55024
Features	Guidance Videos, 31 Language Display on LCD, Notification of Cleaning Timing, Head Check, Real Time Clock(Optional), Password Lock, External Logo and Font Download, Turn-off LCD, Stand-by, Status Reply and more

OPTIONS	
Accessories	Mounting Stand, Object Detection Sensor, I/O Relay Box, Pressure Roller and more

For more information, please visit www.satoasiapacific.com or scan QR code below

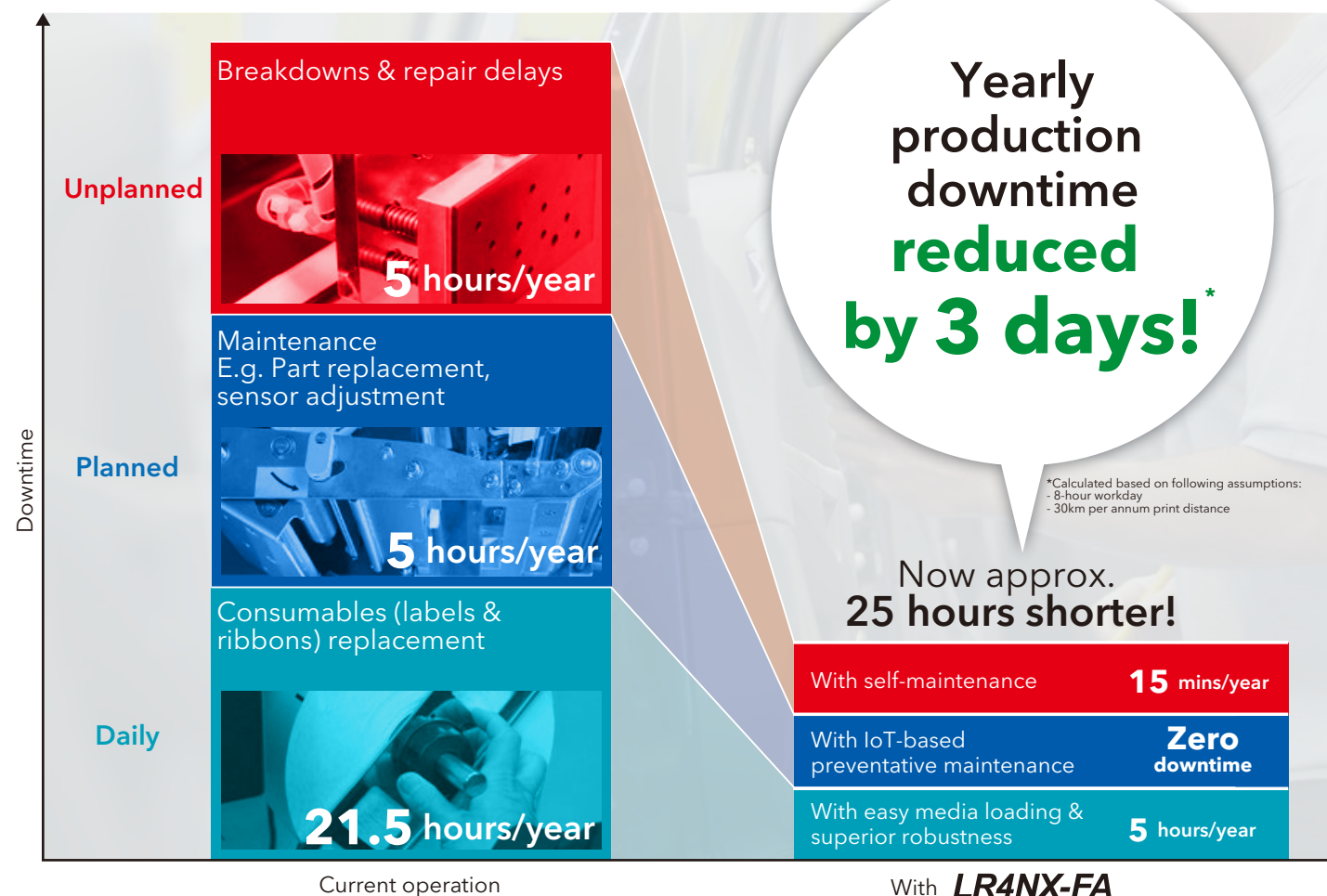


LR4NX-FA



Robust Design and IoT-enabled to Minimise Downtime!

SOS
SATO Online
Services



Streamline daily operations

Robust design for industrial printing

- Thermal head and platen roller - 1.6 times* more durable than previous models
- Large ribbon roll capacity - 50% reduction in change frequency
- Easy, tool-free replacement of service parts

*Based on internal testing



Thermal head

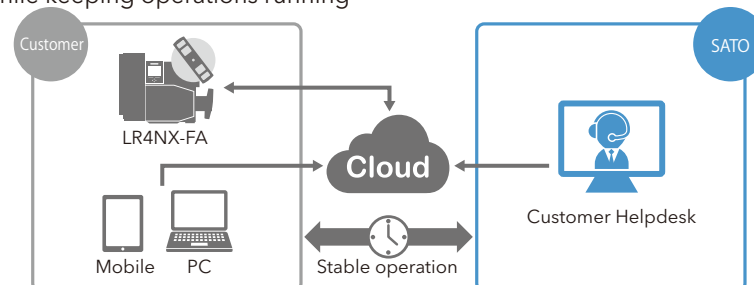
Platen roller

Prevent breakdowns before they occur

SOS
SATO Online
Services

IoT-based preventative maintenance for stable operations

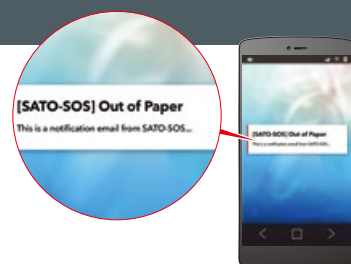
Monitor printer operations 24/7 & notify when part needs to be replaced, while keeping operations running



Troubleshooting

On-the-spot fixes for problems

Send operators email notifications and video tutorials/instruction manuals to fix errors promptly



User-friendly features for greater operational efficiency!

Easy and intuitive to use

3.5-inch large LCD screen

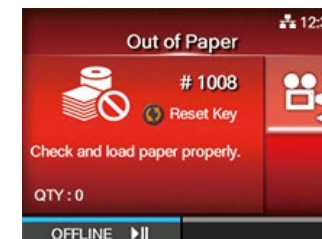
- Guidance videos to help users e.g. load labels, ribbons or replace service parts easily



- Different display colors to show printer status at a glance



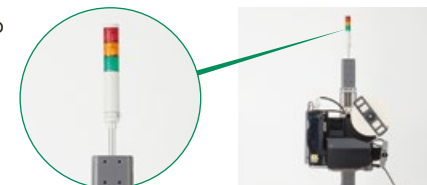
Online



Error

3-color stack light

- Quickly alert users to high priority conditions from a distance



Packed with useful functions

Accurate and stable operation for peace of mind

- Head cleaning notification
- Command error indication
- Password lock
- Printer settings backup / clone

Please clean print head

Multi-language capability

- Support 31 display and 47 print languages
- Also contains built-in scalable fonts



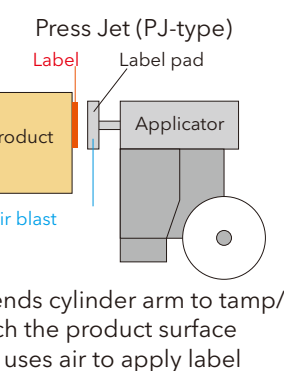
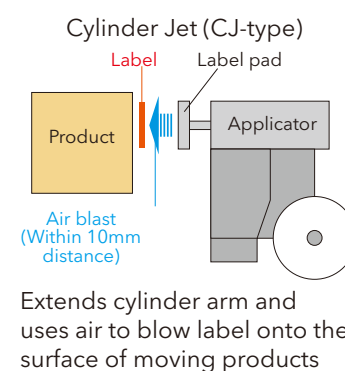
Next-generation smart printing

- Support Application-Enabled Printing (AEP) - Connect printer directly to peripheral devices for standalone printing or PLCs for integrated printing without costly computers

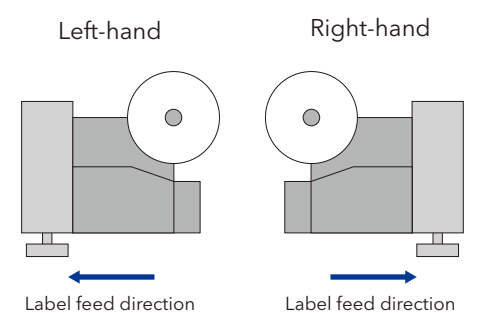
Available in a wide range of variations to meet different customer needs

Customise your system by choosing from a variety of application methods, mounting points and machine configurations.

Application methods



Machine configurations



Mounting points

Top

On top of product travel (U-type)



Side - Vertical

90° to product travel (V-type)



Side - Horizontal

In line with product travel (H-type)



*Other than the above, further customisation of LR4NX-FA is possible to better suit your operations